



Function

- Protect function: Overload, short circuit

Technical specification

- Standard: IEC/EN60947-2, GB14048.2
- Frame current (Im) : 80A
- Rated current(In) : 6, 10, 16, 20, 25, 32, 40, 50, 63, 80A
- Rated voltage (Ue) : 250V(1P), 500V(2P), 1000V(4P)
- Rated impulse voltage(Ui): 500V
- Pole: 1P, 2P, 4P
- Trip curve: B, C
- Rated impulse withstand voltage (Uimp) : 4kV
- Mechanical life: 10000 time
- Electrical life :2000 time
- Rated short-circuit breaking capacity (Icu) : 6, 10kA
- Rated operating breaking capacity (Ics) : 6, 7.5kA

Main feature

- Breaking capacity up to 10kA, strong attachment applicability
- Combined terminal with finger contact protection and red and green safety indication, higher safety
- Current limiting contact system, improve product life
- The shell and key parts are made of flame retardant, high temperature and impact resistant plastics
- Modular design, maximum rated current up to 80A
- Novel and unique appearance, complete certificate

Normal Operating Conditions and Installation Condition

- The ambient air temperature:-5~+40°C , Average not more than +35°C within 24 hours
- Altitude(m):Not exceed 2000 meters
- Protection degree:IP20
- Mounting: On Din rail TH35-7.5 mounting rail installation

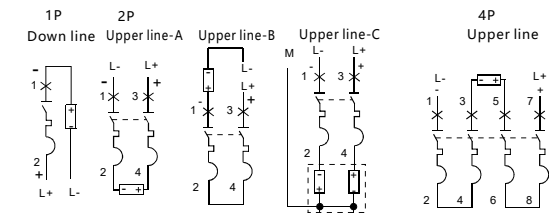
Copper wire connection

Rated current(In)	Copper wire connection (mm ²)
6A	1
10, 13A	1.5
16, 20A	2.5
25A	4
32A	6
40A	10
50, 63	16
80A	25
100A	35
125A	50

Character

Test	Type	Test Current	Initial State	Trip or non-trip time	expected result
a	C	1.05In	Cold state	t≤1h	No Trip
b	C	1.3In	followed by experiment a	t<1h	Trip
c	C	2.55In	Cold state	1s<t<60s(In≤32A) 1s<t<120s(In>32A)	Trip
d	C	8In	Cold state	t≤0.2s	No Trip
e	C	12In	Cold state	t<0.2s	Trip

wiring diagram



wiring instructions : 1 L+:positive pole, L-: negative pole; 2 +: breaker positive, -: Breaker negative;

3-4: Load; 4 Dc power supply "L-" ground connection, Positive and negative

power system neutral pole "M" grounding;

Dimensions

